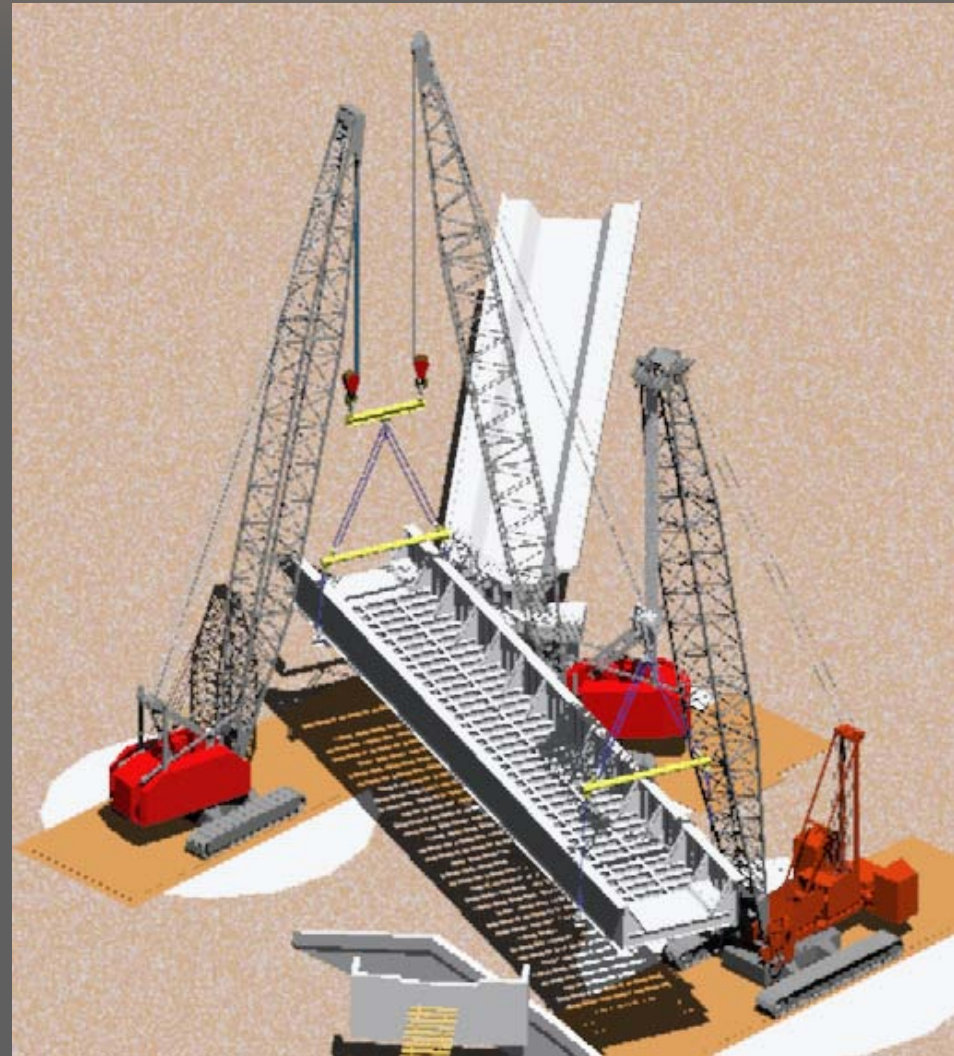
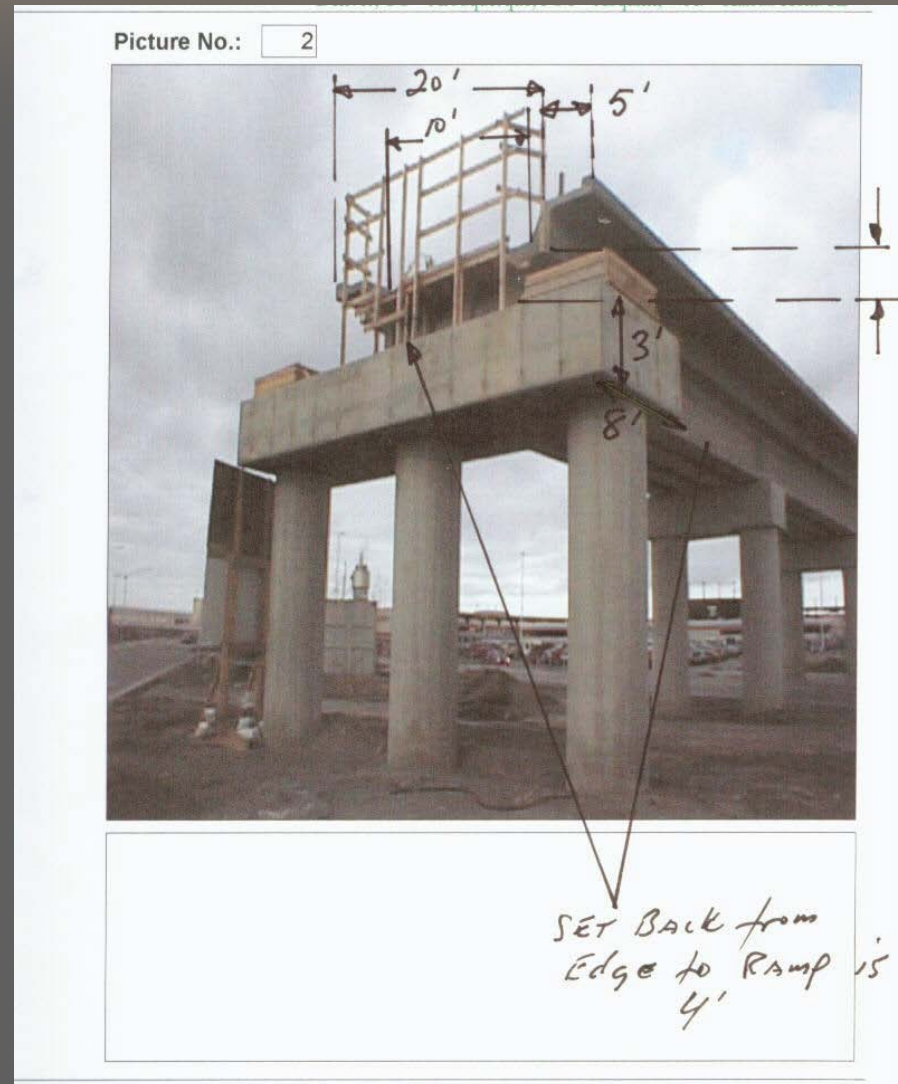
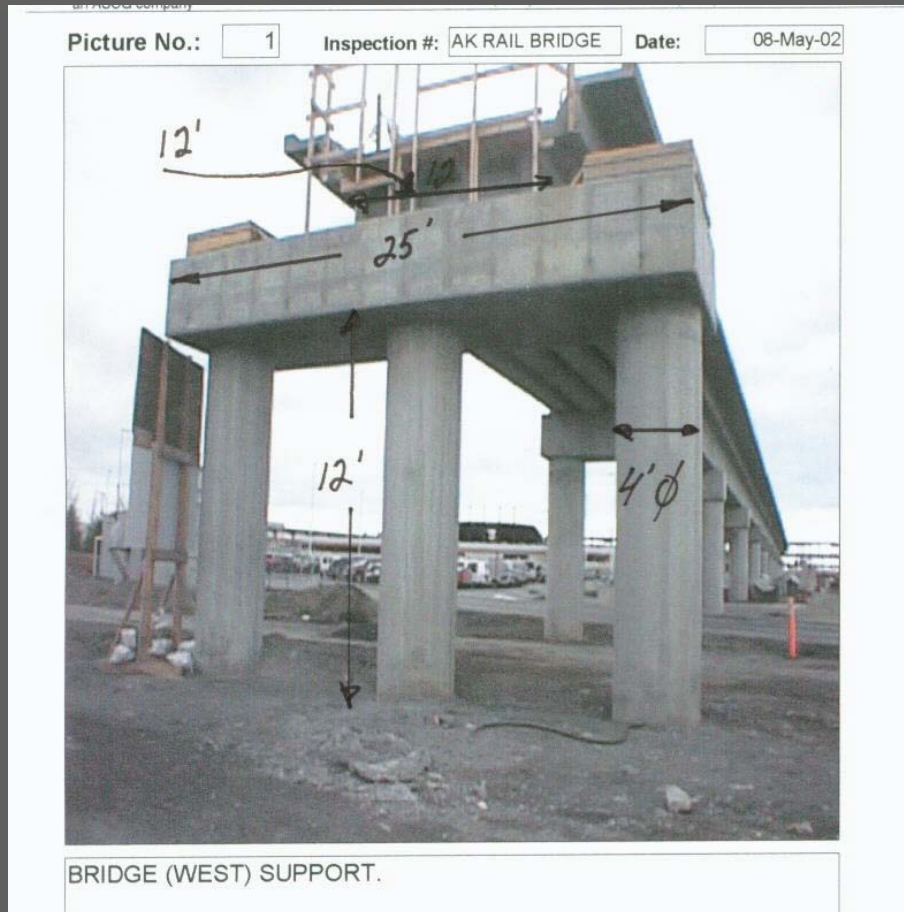


3 Crane Bridge Lift– 1 Nights Work

- ⇒ 3 crane lift at 70% cap.
- ⇒ Bridge design provided
- ⇒ Extensive field work
- ⇒ No lift lugs!
- ⇒ Design special spreaders
- ⇒ Work with heavy hauler
- ⇒ Coordinate with client
- ⇒ Execute in one night

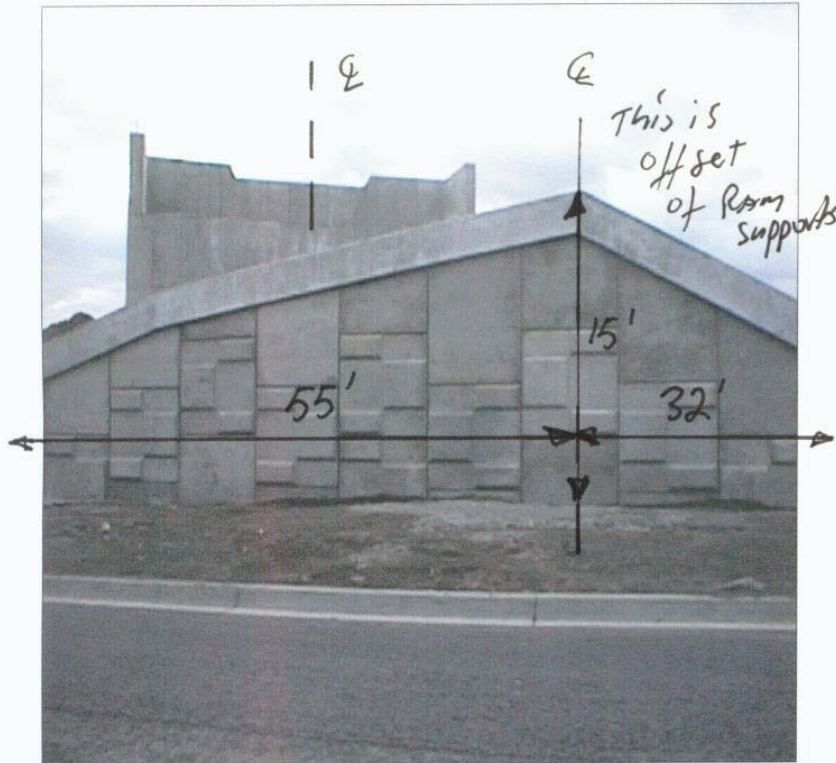


Field Measurements



Field Measurements

Picture No.: 3 Inspection #: AK RAIL BRIDGE Date: 08-May-02



BRIDGE (EAST) SUPPORT.

Picture No.: 4



Field Measurements

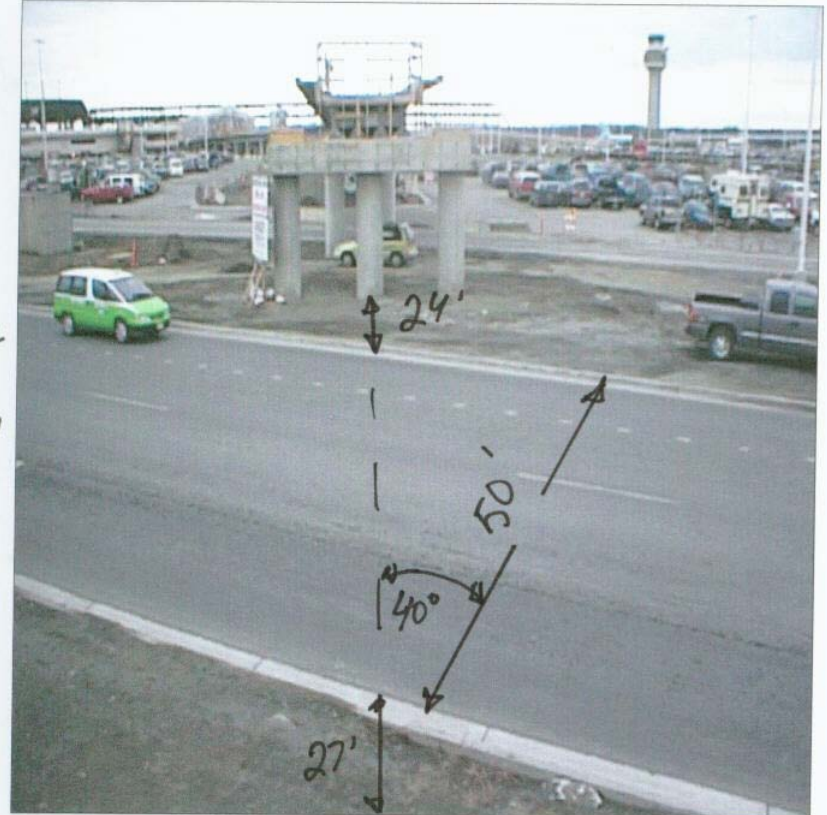
Picture No.: 5 Inspection #: AK RAIL BRIDGE Date: 08-May-02



TO
CORNER
EAST
South

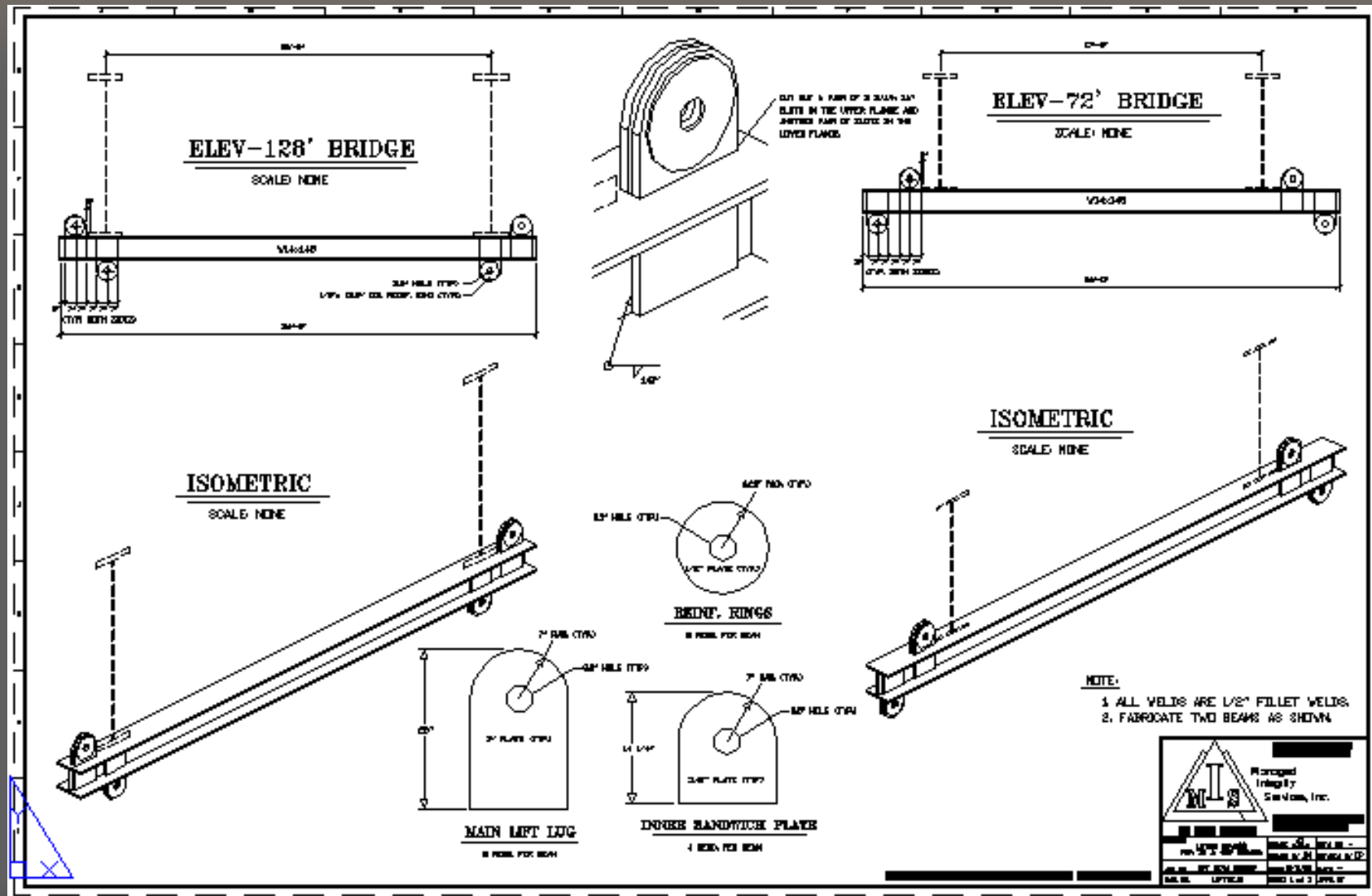
BRIDGE (EAST) SUPPORT.

Picture No.: 6

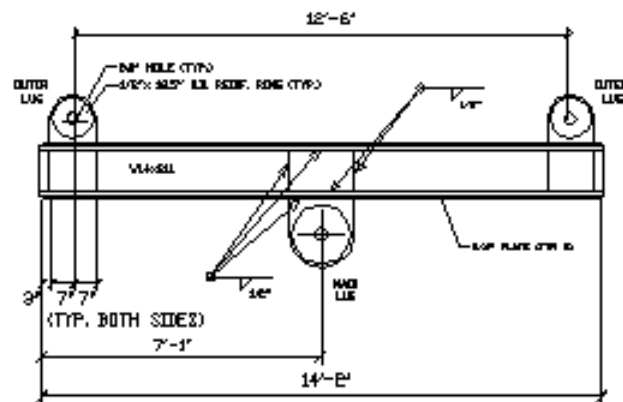


LOOKING TOWARDS WEST. DISTANCE FROM CURB TO EAST WALL IS 27' AT CENTRE (LOOKING AT WEST SUPPORT CENTRE PILLAR).

New Lift Beams – for 72' & 128' Bridges

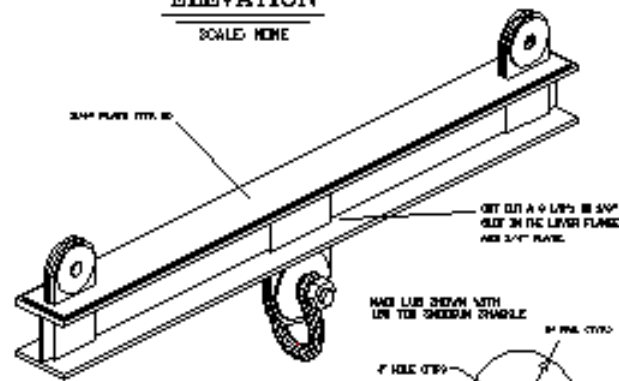


New Equalizer Beam 128' Bridge



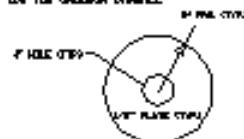
ELEVATION

SCALE: NONE



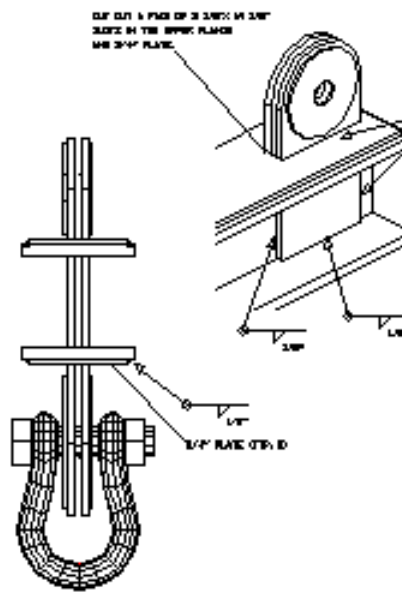
ISOMETRIC

SCALE: NONE

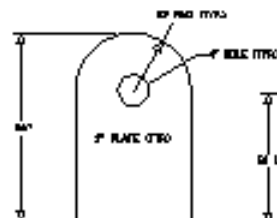


MAIN LUG

1/2\"/>

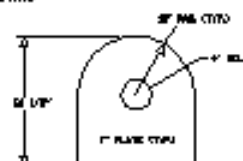


STIFFENER DETAIL



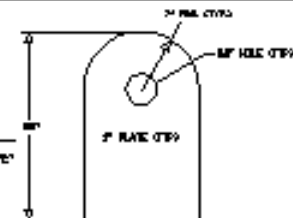
MAIN LEFT LUG

1/2\"/>



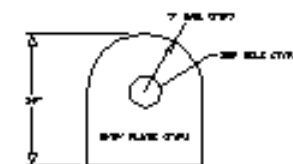
OUTER SANDWICH PLATE

1/2\"/>



OUTER LEFT LUG

1/2\"/>



OUTER SANDWICH PLATE

1/2\"/>



MAIN LUG

1/2\"/>

NOTES

1. ALL WELDS ARE 1/8\"/>



Managed
Engineering
Company, Inc.

DESIGNED BY	DATE
CHECKED BY	DATE
APPROVED BY	DATE
SCALE	SCALE

LiftPlanner Diagram 1

PLAN VIEW

MANITOWOC 4000V-3			
30' BOOM - CAPACITY CHART - 30'			
WIND	SWAY	SWAY	SWAY
10'	10'	10'	10'
20'	20'	20'	20'
30'	30'	30'	30'
40'	40'	40'	40'
50'	50'	50'	50'
60'	60'	60'	60'
70'	70'	70'	70'
80'	80'	80'	80'
90'	90'	90'	90'
100'	100'	100'	100'

MANITOWOC 4000V-3	
WIND	SWAY
10'	10'
20'	20'
30'	30'
40'	40'
50'	50'
60'	60'
70'	70'
80'	80'
90'	90'
100'	100'

SCALE = 1" = 20' & CAPACITY

SEE NOTE 3

MANITOWOC 4000V
120' BOOM
28' RAD.

THE 4000V WILL WALK
36'-9" STRAIGHT WEST
TO COMPLETE LIFT.

RETENTION WALL

EAST ABUTMENT

SEE NOTE 4

NORTH ABUTMENT

FILL AND LEVEL AREAS WITH
CLASS 5 AND DOUBLE (OR TRIPLE)
SHEET WITH PLYWOOD TO
PROTECT ROADWAY.

MANITOWOC 4000V
130' BOOM
28' RAD.



SCALE IN FEET

MANITOWOC 2250S-3			
30' BOOM - CAPACITY CHART - 30'			
WIND	SWAY	SWAY	SWAY
10'	10'	10'	10'
20'	20'	20'	20'
30'	30'	30'	30'
40'	40'	40'	40'
50'	50'	50'	50'
60'	60'	60'	60'
70'	70'	70'	70'
80'	80'	80'	80'
90'	90'	90'	90'
100'	100'	100'	100'

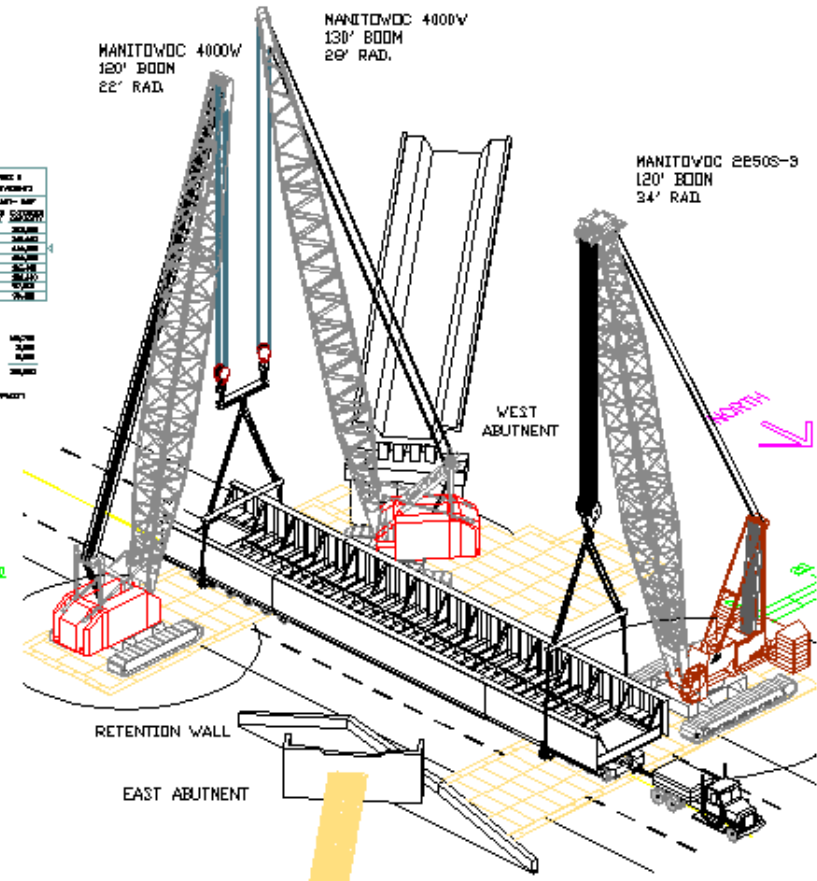
MANITOWOC 2250S-3	
WIND	SWAY
10'	10'
20'	20'
30'	30'
40'	40'
50'	50'
60'	60'
70'	70'
80'	80'
90'	90'
100'	100'

SCALE = 1" = 20' & CAPACITY

MANITOWOC 2250S-3
120' BOOM
34' RAD.

NOTES

- 1.) THE PRIME MOVER & PLATFORM TRAILERS ARE 4' EAST OF ROAD CENTER.
- 2.) THE LIFTING POINTS ARE 14'-0" FROM BOTH ENDS OF THE BRIDGE.
- 3.) THE SOUTH LIFTING POINTS AND CENTERLINE OF THE EAST 4000V ARE IN LINE WITH THE SOUTHEAST CORNER OF THE WEST ABUTMENT.
- 4.) THE NORTH LIFTING POINTS AND CENTERLINE OF THE 2250S-3 ARE IN LINE WITH THE NORTHERNMOST CORNER OF THE EAST ABUTMENT.



ISOMETRIC
SCALE: NONE

Managed Integrity Services, Inc.

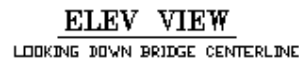
an ASCO company

10000 W. 100th Ave. Suite 100
Denver, CO 80231

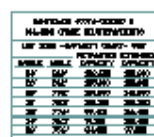
Phone: (303) 751-1000
Fax: (303) 751-1001
Web: www.mis-inc.com

PROJECT: BRIDGE LIFT
CLIENT: JIM HENRY & SONS
DATE: 10/1/00
DRAWN BY: JIM HENRY
CHECKED BY: JIM HENRY
APPROVED BY: JIM HENRY

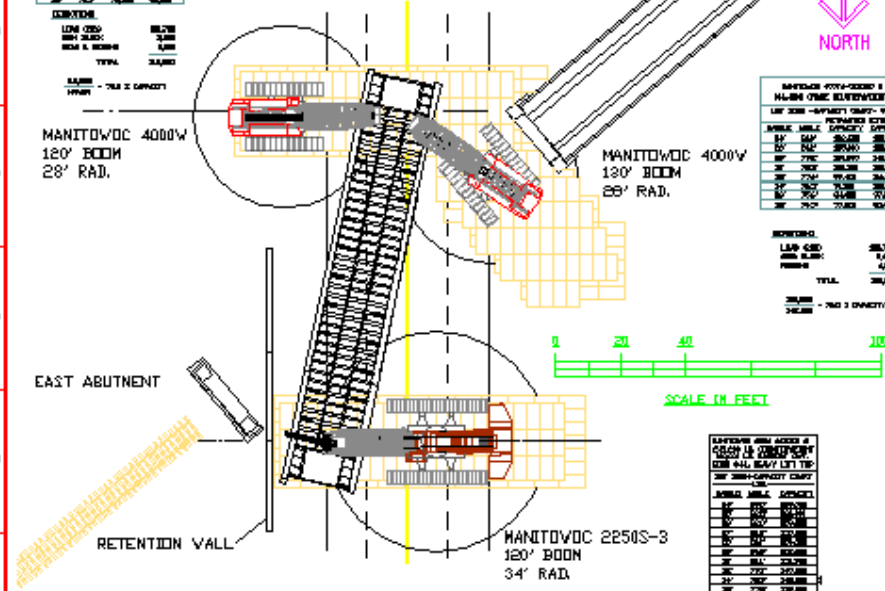
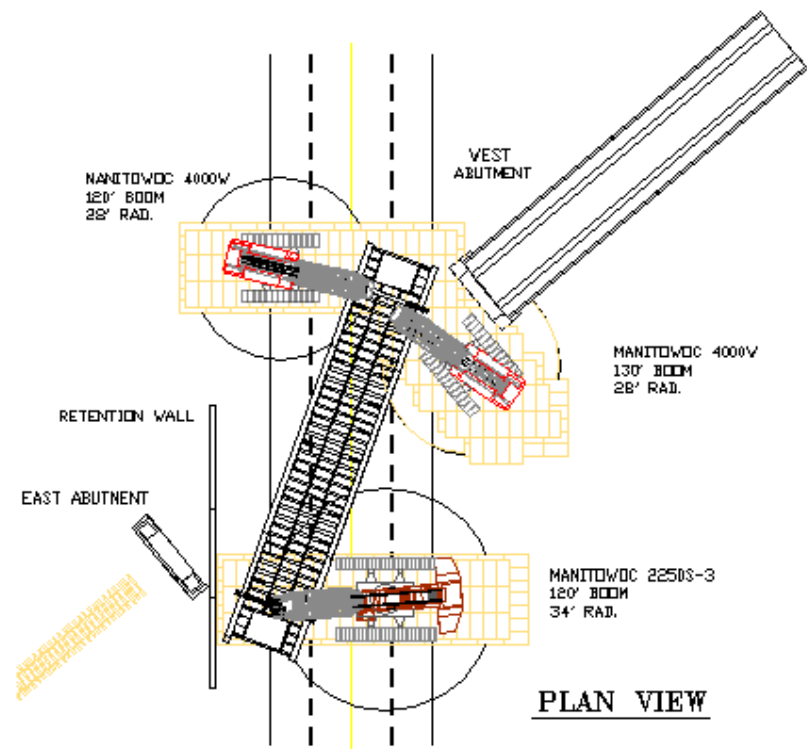
LiftPlanner Diagram 2

[illegible]

LINE (25)	DELTA
NEW ORDER	2,000
NEW S. ORDER	5,000
TOTAL	7,000



LEAD CND	25,779
AMT BLK	8,640
PRIME	4,884
TTL	39,303



MODEL	MSRP	SALES TAX
10	\$1,199	\$119.90
15	\$1,499	\$149.90
20	\$1,799	\$179.90
25	\$2,099	\$209.90
30	\$2,399	\$239.90
35	\$2,699	\$269.90
40	\$2,999	\$299.90
45	\$3,299	\$329.90
50	\$3,599	\$359.90
55	\$3,899	\$389.90
60	\$4,199	\$419.90
65	\$4,499	\$449.90
70	\$4,799	\$479.90
75	\$5,099	\$509.90
80	\$5,399	\$539.90
85	\$5,699	\$569.90
90	\$5,999	\$599.90
95	\$6,299	\$629.90
100	\$6,599	\$659.90
105	\$6,899	\$689.90
110	\$7,199	\$719.90
115	\$7,499	\$749.90
120	\$7,799	\$779.90
125	\$8,099	\$809.90
130	\$8,399	\$839.90
135	\$8,699	\$869.90
140	\$8,999	\$899.90
145	\$9,299	\$929.90
150	\$9,599	\$959.90
155	\$9,899	\$989.90
160	\$10,199	\$1,019.90
165	\$10,499	\$1,049.90
170	\$10,799	\$1,079.90
175	\$11,099	\$1,109.90
180	\$11,399	\$1,139.90
185	\$11,699	\$1,169.90
190	\$11,999	\$1,199.90
195	\$12,299	\$1,229.90
200	\$12,599	\$1,259.90
205	\$12,899	\$1,289.90
210	\$13,199	\$1,319.90
215	\$13,499	\$1,349.90
220	\$13,799	\$1,379.90
225	\$14,099	\$1,409.90
230	\$14,399	\$1,439.90
235	\$14,699	\$1,469.90
240	\$14,999	\$1,499.90
245	\$15,299	\$1,529.90
250	\$15,599	\$1,559.90
255	\$15,899	\$1,589.90
260	\$16,199	\$1,619.90
265	\$16,499	\$1,649.90
270	\$16,799	\$1,679.90
275	\$17,099	\$1,709.90
280	\$17,399	\$1,739.90
285	\$17,699	\$1,769.90
290	\$17,999	\$1,799.90
295	\$18,299	\$1,829.90
300	\$18,599	\$1,859.90
305	\$18,899	\$1,889.90
310	\$19,199	\$1,919.90
315	\$19,499	\$1,949.90
320	\$19,799	\$1,979.90
325	\$20,099	\$2,009.90
330	\$20,399	\$2,039.90
335	\$20,699	\$2,069.90
340	\$20,999	\$2,099.90
345	\$21,299	\$2,129.90
350	\$21,599	\$2,159.90
355	\$21,899	\$2,189.90
360	\$22,199	\$2,219.90
365	\$22,499	\$2,249.90
370	\$22,799	\$2,279.90
375	\$23,099	\$2,309.90
380	\$23,399	\$2,339.90
385	\$23,699	\$2,369.90
390	\$23,999	\$2,399.90
395	\$24,299	\$2,429.90
400	\$24,599	\$2,459.90
405	\$24,899	\$2,489.90
410	\$25,199	\$2,519.90
415	\$25,499	\$2,549.90
420	\$25,799	\$2,579.90
425	\$26,099	\$2,609.90
430	\$26,399	\$2,639.90
435	\$26,699	\$2,669.90
440	\$26,999	\$2,699.90
445	\$27,299	\$2,729.90
450	\$27,599	\$2,759.90
455	\$27,899	\$2,789.90
460	\$28,199	\$2,819.90
465	\$28,499	\$2,849.90
470	\$28,799	\$2,879.90
475	\$29,099	\$2,909.90
480	\$29,399	\$2,939.90
485	\$29,699	\$2,969.90
490	\$29,999	\$2,999.90
495	\$30,299	\$3,029.90
500	\$30,599	\$3,059.90

EXPENSES	
LABOR 40%	160.00
20% BULKY	80.00
20% FREIGHT 50%	20.00
LEFT HAND PRICING	20.00
TOTAL	280.00

$$\frac{\text{COST}}{\text{AVERAGE}} = 93.2 \text{ CENTS}$$

PLAN VIEW

NOTES

- 1.) THE 2250S-3 REMAINS STATIONARY WITH SWING BRAKE OFF AS THE EAST 4000W WALKS WEST 16'-0" AND THE WEST 4000W WALKS 15'-10" NORTHWEST
- 2.) THE MANITOWOC 4000W STOPS WALKING WEST WHEN THE BRIDGE IS WITHIN 3'-6" OF THE WEST ABUTMENT.

PLAN VIEW

NOTES

- 1.) THE 4000W'S REMAIN STATIONARY WITH SWING BRAKES OFF AS THE 22503-3 WALKS WEST 18'-2".
- 2.) THE MANITOWOC 22503-3 STOPS WALKING EAST WHEN THE BRIDGE IS WITHIN 3'-0" OF THE RETENTION WALL.



LiftPlanner Diagram 3

1.) ALL OF THE CRANES LIFT THE BRIDGE 21'-0".

2.) THE 2250S-3 WALKS FORWARD TO WITHIN 6' OF RETENTION WALL.
3.) THE 4000W's REMAIN STATIONARY WITH SWING BRAKES OFF.

4.) THE 2250S-3 REMAINS STATIONARY WITH SWING BRAKES OFF.
5.) THE 4000W's WALK AND SWING THE BRIDGE TOWARD IT'S FINAL POSITION.

6.) THE 4000W's WALK, SWING & LOWER TO FINAL POSITION.

View A-A

View B-B

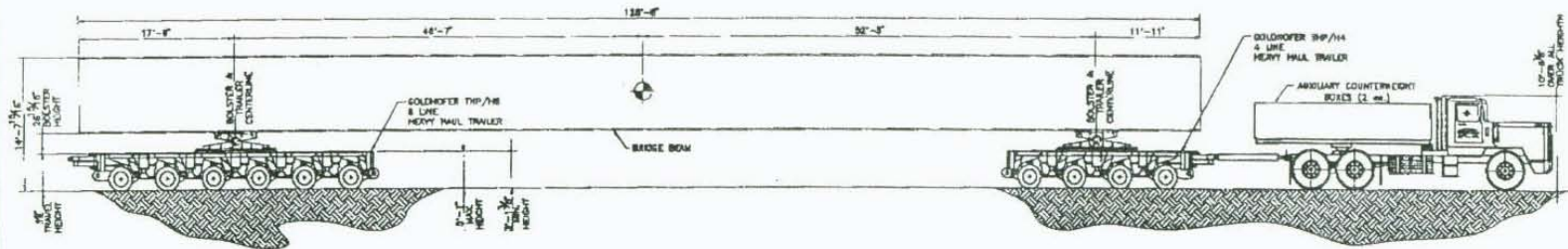
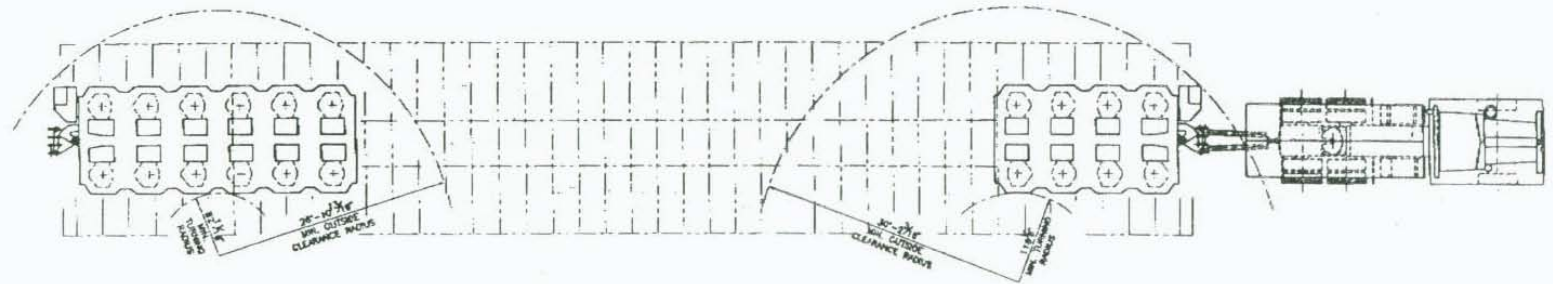
PREPARED WITH: LIFTPLANNER SOFTWARE : (952) 475 6026

 <p>Managed Integrity Services, Inc. an ASCO company</p>	<p>PROJECT NO. 01-11-01 DATE: 11/11/01</p>	
	<p>DESIGNED BY: J. L. HARRIS CHECKED BY: J. L. HARRIS</p>	<p>DATE: 11/11/01 BY: J. L. HARRIS</p>
	<p>APPROVED BY: J. L. HARRIS DATE: 11/11/01</p>	<p>DATE: 11/11/01 BY: J. L. HARRIS</p>
	<p>PROJECT: 01-11-01 SHEET: 1 OF 1</p>	

Heavy Haul Diagram

128' Transport

Bridge: 415 k



BRIDGE BEAM HAUL
TRANSPORTER GENERAL ARRANGEMENT

NOTICE

This drawing has been prepared for the sole use of Lampson International LLC. It is loaned to the customer for his confidential use only. Reproduction or distribution without the permission of Lampson International LLC is prohibited.

No.	Date	By	Description	By	Date

USED ON:

AIA RAIL STATION
BRIDGE BEAM HAUL
TRANSPORTER GENERAL ARRANGEMENT
ANCHORAGE, ALASKA

LAMPSON INTERNATIONAL
ENGINEERING & CONSTRUCTION
WASHINGTON, D.C.

10/24/2011
4/23/2012
0123-0010

128' Bridge on Platform Trailers



Custom Lift Beams



Custom Lift Beams – End Detail



Rigging up the Manitowoc 2250



72' Bridge Lift



128' Bridge Lift



Please visit “www.liftplanner.net”

- ⇒ More animations
- ⇒ PDF Samples book with 24 lift diagrams
- ⇒ Current crane library listing
- ⇒ Much more information
- ⇒ Contact info – phone & email